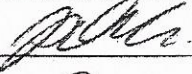



# AVAZYME

Agriculture and Food Testing Solutions

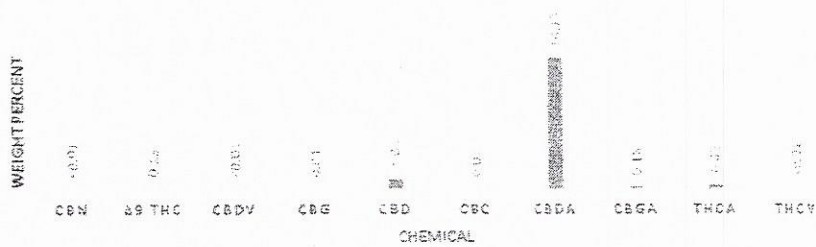
## CERTIFICATE OF ANALYSIS

Certificate ID: CS0146\_18792\_018\_C  
 Client Sample ID: Blue Ridge Hemp  
 Sample Description: Elektra (2)  
 Receive sample: 23-Oct-18  
 Initiate analyses: 23-Oct-18

Analyst: Jacob Edwards	Signature: 	Date: 25-Oct-18
Reviewed by:	Signature: 	Date: 25 Oct 18

Test Type: Total Cannabinoid Profile  
 Technical Procedure: TP A0033-01

Results:



Chemical Analyzed	% Dry Weight	Concentration (mg/g)
CBN	<0.01	<0.10
Δ <sup>9</sup> THC	0.13	1.34
CBDV	<0.01	<0.10
CBG	0.04	0.38
CBD	1.03	10.29
CBC	0.07	0.68
CBDA	14.11	141.06
CBGA	0.18	1.77
THCA	0.43	4.29
THCV	<0.01	<0.10
total THC *	0.51	5.10
total CBD *	13.40	134.00
total	15.98	159.81

**Test #002**

\* total THC is calculated by Δ9 THC + 0.877xTHCA  
 \* total CBD is calculated by CBD + 0.877xCBDA

Concentration of cannabinoids were determined by HPLC-MS/MS with an Avazyme Intra lab validated method utilizing certified reference standards for each chemical analyzed.

Avazyme warrants that this study was performed in accordance with appropriate laboratory research practices and protocols.

Avazyme is not responsible for Sponsor's use of the information or concepts generated as part of the study, and will not be liable for any loss or damage resulting from such use.